

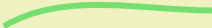


LAW SCHOOL

— 101 —

BSA EDITION

Welcome to
HLS! We're SO
happy you're
here.



We are your
BSAs!

Let's get
started

101 Roadmap

- [1] What is a BSA?
- [2] A Preview of Fall
- [3] Student Life at HLS
- [4] Q&A



A graphic of a spiral-bound notebook with a white page and a green border. The spiral binding is at the top. On the left side, there are two horizontal bars, one orange and one green, overlapping the page. The number '01' is centered on the page, enclosed in a purple circular arrow. Below the number is the title 'What is a BSA?' in green, and a subtitle 'Our role in supporting the 1L experience' in black. In the bottom right corner, there is a circular red seal with a white scale of justice and hands, surrounded by the text 'HARVARD LAW SCHOOL' and 'BOARD OF STUDENT ADVISERS' with the years '19' and '10' on either side.

01

What is a BSA?

Our role in supporting
the 1L experience



The Board of Student Advisers (BSA)



(1) Instructors for First-Year Legal Research & Writing

(2) Peer mentors to 1Ls



(3) Organizers of the Ames Moot Court competition



A graphic of a spiral-bound notebook with a white page and a green cover. The spiral binding is at the top. On the left side, there are two horizontal tabs: an orange one on top and a green one below it. The page contains the number '02' in a purple circle, the title 'A Preview of Fall' in green, and the subtitle 'What to expect' in black.

02

A Preview of Fall

What to expect

The 1L Curriculum

- Civil Procedure (“Civ Pro”)
- Contracts
- Criminal Law (“Crim”)
- Legislation & Regulation (“Leg Reg”)
- Torts
- Property
- Legal Research & Writing (“LRW”)(all year)
- A reading group (optional)



In a Nutshell!

- 1L January Experiential Term Elective (“J-term”)(winter only)
- Constitutional Law (“Con Law”)(spring only)
- An upper-level elective (spring only)



How should I prepare for class?



Read the case(s)

Know the facts, legal issue, and holding (the court's answer to the legal issue).



Be ready to summarize the cases

In preparation for the beloved cold-call



Review your notes after class

Review the takeaways highlighted by your professor



Attend office hours (recommended)

Professors are humans too, and are here to help!



Rinse-and-Repeat

That's it for your first month of law school!



Useful Resources

1L Bootcamp



Videos focus on how to read cases, outline, and take exams.



1L Bootcamp



DOS Learning Support

DOS can help with information and referrals for academic support



Accessibility Services

Apply for accommodations and connect with helpful resources



Upcoming BSA Fall Programming



BSA Outlining &
Mental Health &
Wellness Panels



Reading Week +
Finals

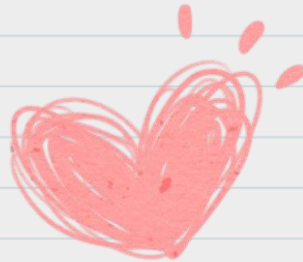
Sept

Oct

Nov

Dec

BSA Note-Taking &
Time Budgeting
Panels



BSA Exam Prep
Panel

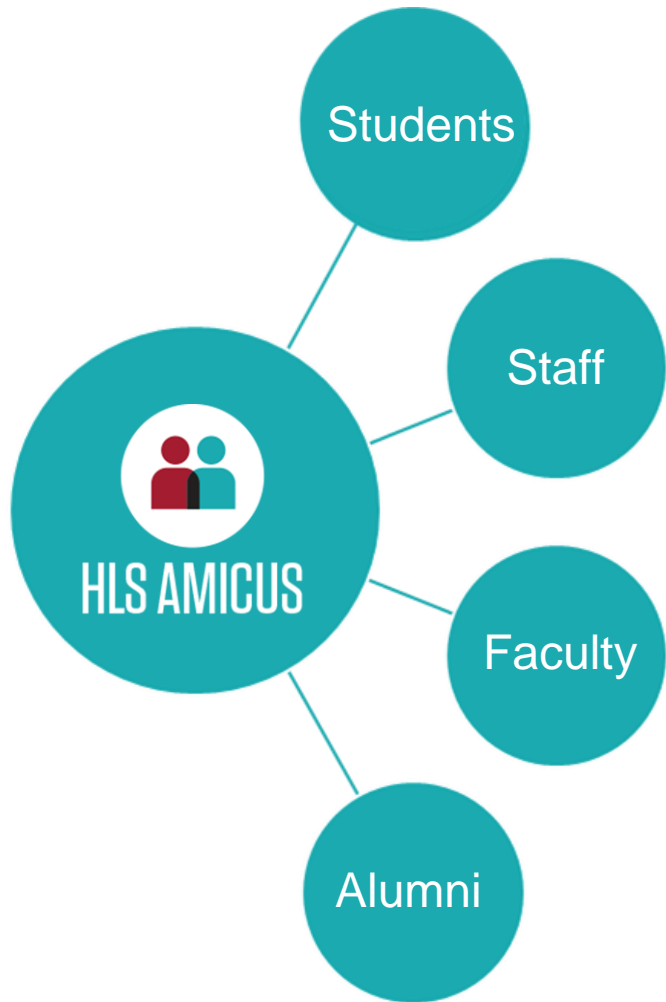


A graphic of a spiral-bound notebook with a white page and a green border. The spiral binding is at the top. On the left side, there are two horizontal tabs: an orange one on top and a green one below it. In the center of the page, the number '03' is displayed in a large, bold, black font, enclosed within a light purple, stylized circular arrow graphic. Below this, the title 'Student Life at HLS' is written in a bold, green, sans-serif font. Underneath the title, the subtitle 'Community, professionalism, and wellness' is written in a smaller, black, sans-serif font.

03

Student Life at HLS

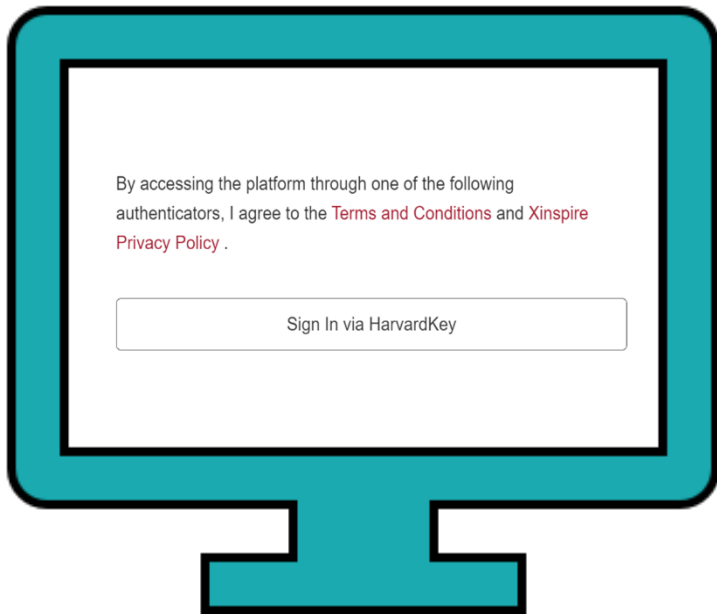
Community,
professionalism, and
wellness



What is Amicus?

**HLS Amicus is an online tool
that is used to form
connections within the Harvard
Law School community**

Getting Started on Amicus



Claim your Harvardkey

Login to Amicus

Read the terms and conditions

Accept and register

Your Profile

Your profile is a place to show the HLS community who you are.

You will have a better chance of making connections on Amicus with a more complete profile.

Amicus Dos and Don'ts

- Don't use Amicus to ask for a job/interview
- Don't use Amicus for commercial, public, or political purposes
- Don't post or send obscene, vulgar, abusive, defamatory, profane, or threatening content on Amicus

- Do review the Terms and Conditions
- Do use Amicus to discuss courses with students
- Do use Amicus to connect with Alumni for advising and mentoring
- Do use Amicus to find members of the HLS community who share your interests
- **Do use Amicus to stay connected with your BSA, RA, and Student Representatives**

Additional Questions? Email the HLS Amicus team at amicus@law.harvard.edu.

Building Healthy & Vibrant Connections



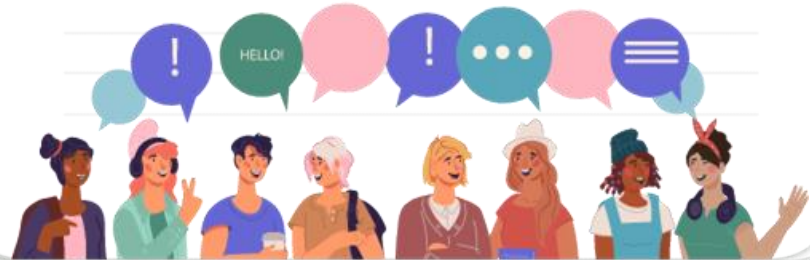
Your Section: Stronger Together

Collaboration over competition is **the secret sauce to success**. We are each other's best resource and support.



Get outside your comfort zone!

Be inclusive to all and open to spontaneous connections.



Student Advocacy: Navigating a Changing Legal Landscape

As future lawyers, it is our responsibility to keep abreast of the changing legal landscape. At HLS, there are many ways to affect positive change.



**Ask Us About:
Student Organizations,
Student Practice
Organizations, & Clinics**

Professionalism: It's About Care

Honor your
appointments &
commitments

Respond to
communications
promptly



Extend collegiality and
respect to all

Make space
for others: inside
and outside class

Be considerate of
“grade talk” and
“job talk”

HLS Plagiarism Policy

All work submitted by a student for any academic or non-academic exercise is expected to be the student's own work. In the preparation of their work, students should always take great care to distinguish their own ideas and knowledge from information derived from sources. The term "sources" includes not only published or computer-accessed primary and secondary material, but also information and opinions gained directly from other people.

The responsibility for learning the proper forms of citation lies with the individual student. Quotations must be properly placed within quotation marks and must be fully cited. In addition, all paraphrased material must be completely acknowledged. Whenever ideas or facts are derived from a student's reading and research, the sources must be indicated. In order to understand the requirement of and process for acknowledging all sources, students should familiarize themselves with the information in the Harvard Guide to Using Sources.

From the Handbook of Academic Policies, available at
<https://hls.harvard.edu/hap>

Proper Attribution

1. Cite the source for *any* words, ideas, or methods that are not your own, regardless of where you found them.
2. When you quote the exact words of a source, put those words in quotation marks or in a block quotation.
3. When you paraphrase a source, do not use quotation marks, but you must recast the source sentence entirely in your own words in a new sentence structure.

Joseph Williams, *Style: Lessons in Clarity and Grace* (2007)

Additional Principles for Law School Writing

1. Acknowledge a source when your own analysis or conclusion builds on that source.
2. Acknowledge a source when your idea about a legal opinion comes from a source other than the opinion itself.

Legal Writing Institute, *Law School Plagiarism v. Proper Attribution* 4 (2003)

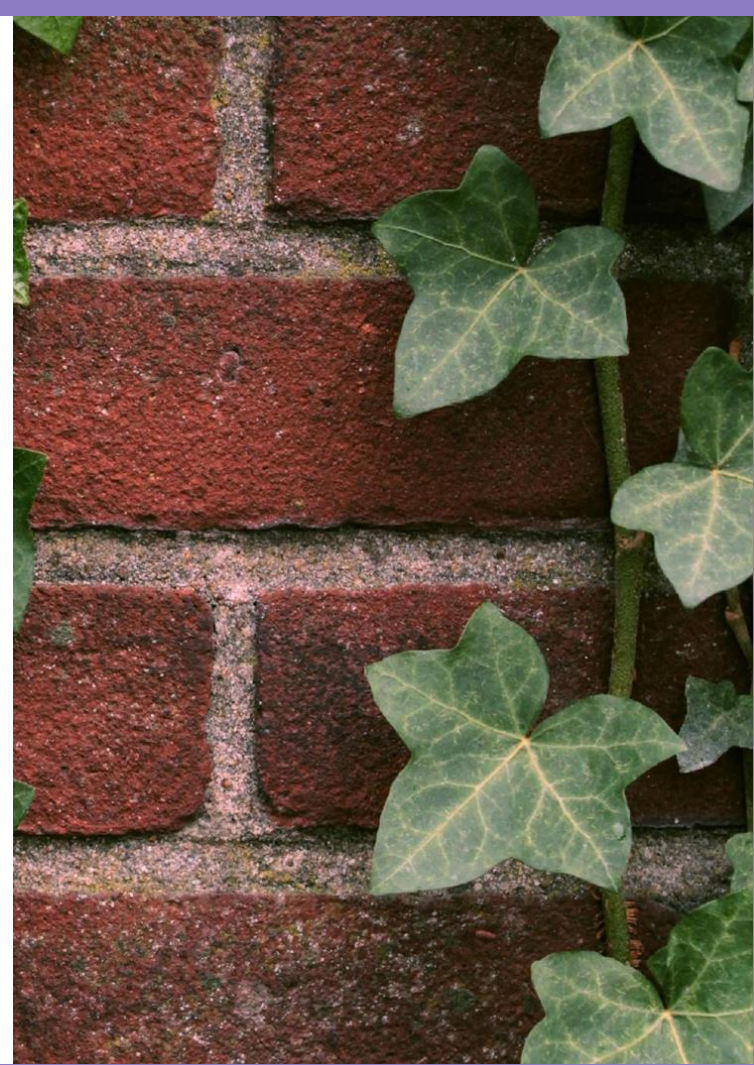
Wellness:

**When
something's
gotta give,
that something
shouldn't be
your health.**



THE BASICS

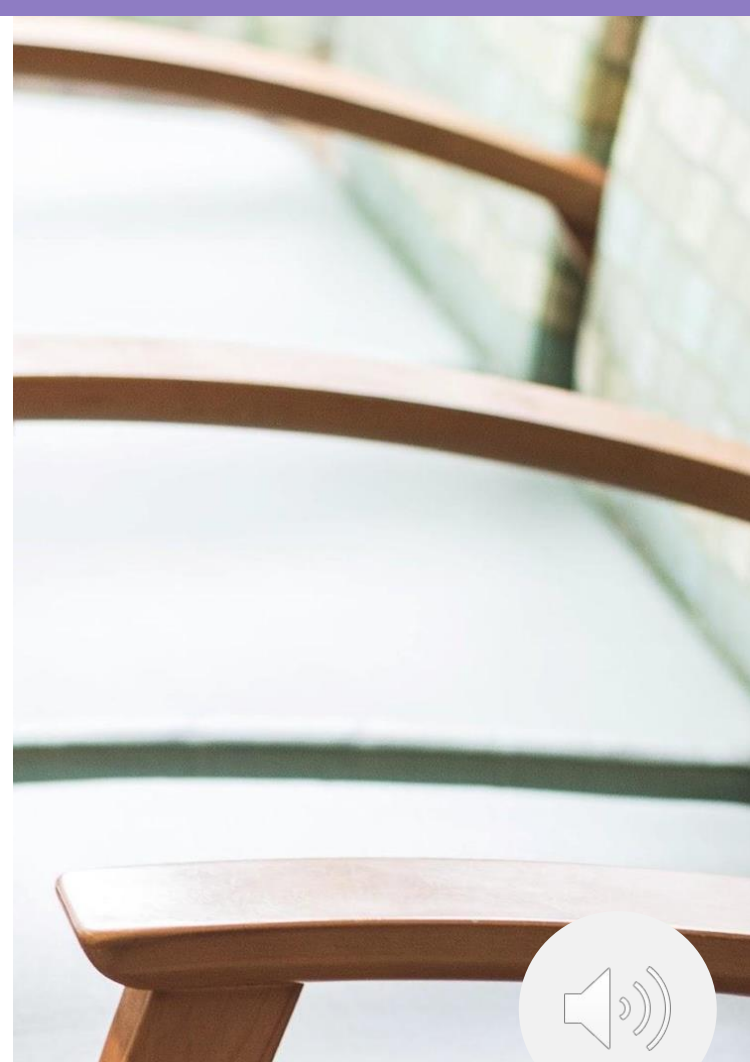
The Counseling and
Mental Health
Service is known as
'CAMHS'



CAMHS Cares

URGENT CARE SESSIONS WITH A CLINICIAN ARE AVAILABLE EVERY BUSINESS DAY

- We are open Monday through Thursday 8am-6pm and Fridays 8am to 5pm.
- **Call 617-495-2042** to request an urgent care appointment with a clinician in-person in our office on the 4th floor of HUHS.
- *Or, if you would rather talk by phone...*





CAMHS Cares Line for Students

617-495-2042

- During CAMHS business hours, **press 1** to speak directly with a CAMHS administrative assistant to make, change, or cancel a routine appointment; request a refill; or request an in-person urgent care appointment for that day.
- **Students can opt to speak to a CAMHS Cares counselor directly by phone by following prompts, if currently in crisis or unable to wait for a daytime appointment, or “just need to talk right now about an issue.”**
- During non-business hours when our office is closed—evenings, weekends and holidays—students can call anytime to speak directly with a CAMHS Cares Counselor about an urgent concern at 617-495-2042.



Your Student Health Fee covers the cost of CAMHS services

- Services in CAMHS are covered by the Student Health fee, so there are **no fees and no co-pays** within CAMHS.
- When students are referred to or choose community clinicians outside of HUHS in the local area, a student will use their insurance.



Health Resources

Harvard University Health Services (HUHS)

Smith Student Center

75 Mt Auburn St

Cambridge, MA 02138

Phone (Available 24 Hours): 617-495-5711

Counseling and Mental Health Services (CAMHS)

4th Floor, Smith Student Center

75 Mt Auburn St

Cambridge, MA 02138

Pound Hall: 617-495-4414

Smith Student Center and 24/7 counselor support line: 617-495-2042

Dean of Students Office (DOS)

WCC 3039

Phone: 617-495-1880

dos@law.harvard.edu

HLS Accessibility Services

WCC 3039

Phone: 617-495-8773

accessibility@law.harvard.edu

Center for Wellness and Health Promotion

2nd Floor, Smith Student Center

75 Mt Auburn St

Cambridge, MA 02138

Phone: 617-495-9629

cw@huhs.harvard.edu



A graphic of a spiral-bound notebook with a white page and a green cover. The spiral binding is at the top. On the left side, there are two horizontal tabs: an orange one on top and a green one below it. The page contains the number '04' in a purple speech bubble, the text 'Q&A Session' in green, and 'Ask the BSAs anything!' in black.

04

Q&A Session

Ask the BSAs anything!